

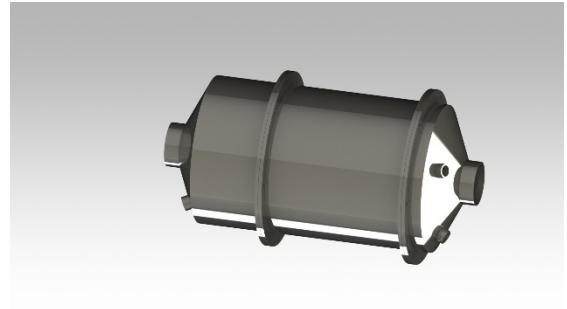


CRT Catalyst Specifications

Application: Prime & Standby Power Generation

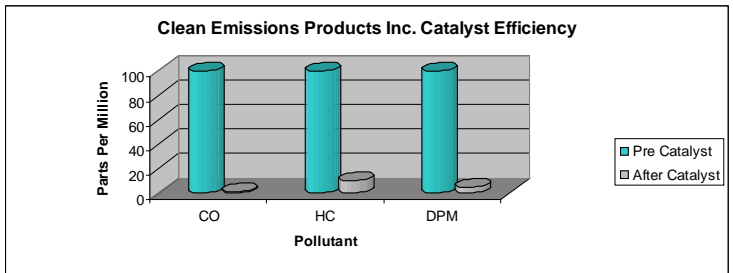
Basic Catalyst & Housing

Stainless Steel DOC (15 Gram Pt Loading)
CRT Filter (Aluminum Titanate / 200 CPSI)
Stainless Steel Housing (Grade 304)
Total Pressure Drop 2-5 kPa (.59 – 1.47 inHg)
Available in Inline & Muffler Configurations



Effectiveness in Reducing Exhaust Emissions

CO (carbon monoxide) up to 99%
HC (hydrocarbons) up to 90%
DPM (diesel particulate matter) up to 95-99%



Lifespan of CRT Catalyst

Stationary Applications (Standby) – 12 to 15 years (500 hours annually)
Stationary Applications (Prime) - 5 to 7 years (1500 hours annually)

Maintenance

Designed to be maintenance free when installed on a regularly maintained diesel engine. Our CRT catalyst will regenerate and clean itself automatically when exposed to exhaust temperatures between 250° C (482° F) and 400° C (752° F) for a minimum of 40% of duty cycle. CRT Catalyst doesn't require removal to clean and no recalibration is required.

Operating Conditions for Successful CRT Performance

Exhaust temperature must be minimum 200° C (392° F). Designed for use with all grades of diesel fuel (ULSD, LSD, High Sulphur Content, Bio Diesel).

Critical Power Products & Services
Tel: 877-315-4176 Email: Sales@criticalpower.com